



# GAT MONTHLY MEMBERSHIP PROGRESS REPORT

Results as of: 9/30/2022

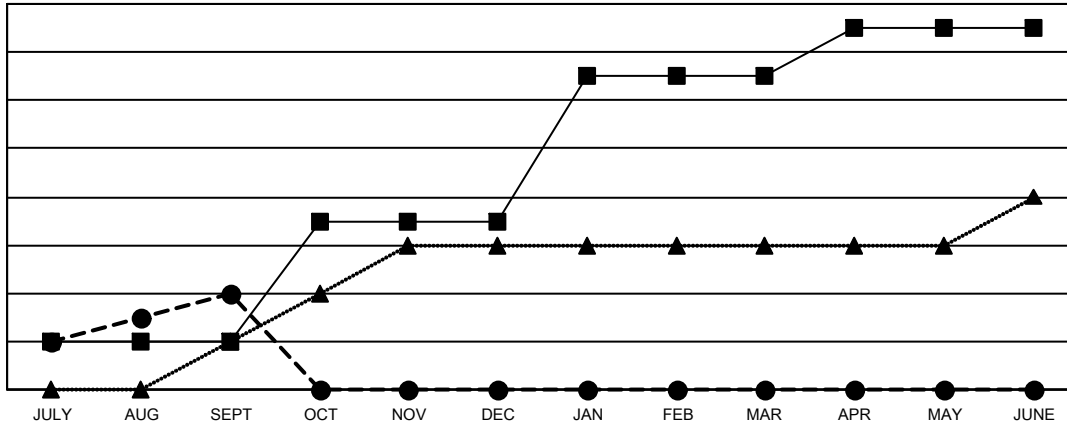
Multiple District A

LOCATION: ONTARIO

Clubs			
RESULTS FOR 2022-2023			
QUARTER	NEW CLUB GOAL	NEW CLUBS	DROPPED CLUBS
JULY/AUG/SEPT	2	4	3
OCT/NOV/DEC	5	0	0
JAN/FEB/MAR	6	0	0
APR/MAY/JUNE	2	0	0

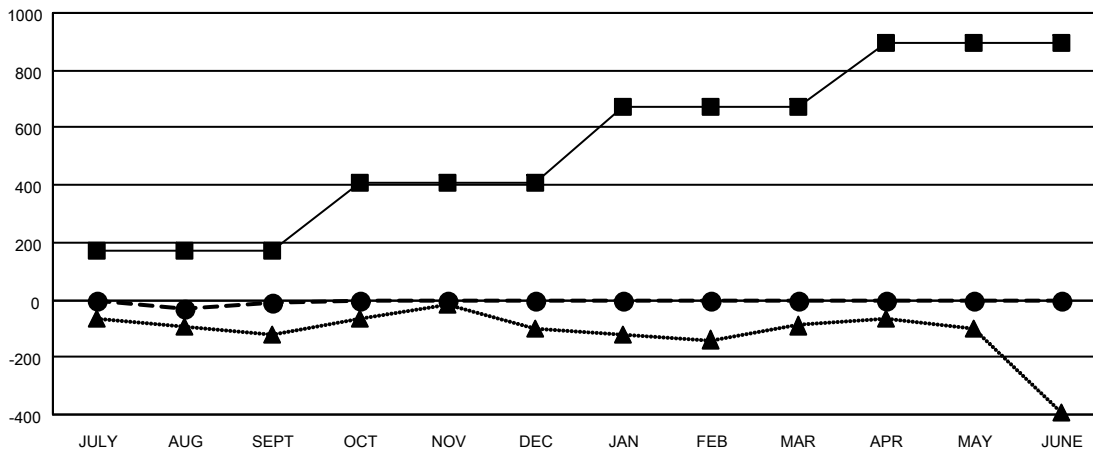
Members			
RESULTS FOR 2022-2023			
QUARTER	MEMBER GROWTH NET GOAL	MEMBER GROWTH ACTUAL	DROPPED MEMBERS ACTUAL (including transfers)
JULY/AUG/SEPT	170	372	331
OCT/NOV/DEC	240	0	0
JAN/FEB/MAR	260	0	0
APR/MAY/JUNE	225	0	0

GOALS AND ACTUAL NEW CLUBS CUMULATIVE



- CURRENT YEAR GOALS FOR NEW CLUBS
- CURRENT YEAR ACTUAL NEW CLUBS
- ▲- LAST YEAR ACTUAL NEW CLUBS

GOALS AND ACTUAL MEMBERS CUMULATIVE



- MEMBER GROWTH NET GOAL
- MEMBER GROWTH ACTUAL
- ▲- LAST YEAR MEMBERSHIP ACTUAL

<b>DROPPED CLUBS: 3</b>	
<b>DROPPED MEMBERS</b>	
DECEASED	55
CLUB CANCELLED	0
OTHER	276
<b>TOTAL</b>	<b>331</b>

104 CLUBS OF 532 ADDED 1 OR MORE NEW MEMBERS

[CLICK HERE FOR CUMULATIVE MEMBERSHIP DATA](#)

GENDER DISTRIBUTION	
MALE	7,914 (65.67%)
FEMALE	4,136 (34.32%)
NON BINARY	0 (0.00%)
PREFER NOT TO ANSWER	1 (0.01%)
<b>TOTAL FAMILY UNIT MEMBERS</b>	<b>2,186</b>
<b>FAMILY MEMBERS PAYING HALF DUES</b>	<b>1,131</b>